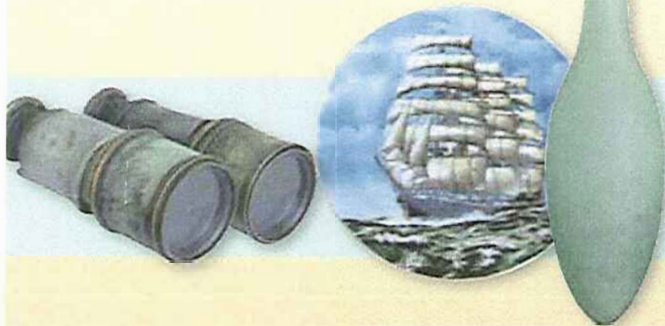




SHIPWRECK!

Since the first days of settlement many vessels have run aground trying to negotiate the treacherous entrance of the Nambucca River; some being completely wrecked on the many hidden reefs around the 'Heads'. In fact the prominent landmark now known as Wellington Rock was itself named after the loss of the iron steamer "Wellington" at the river entrance in 1892.

The museum has many amazing images documenting these incidents as well as photos showing how the ships were towed by tug in and out across the 'bar'.



Sponsored by

Bradley's Real Estate (02) 6568 6599
w: bradleysrealestate.com.au

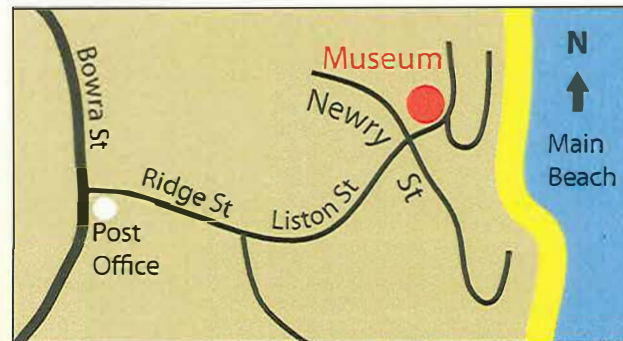
Foreshore Caravan Park (02) 6568 6014
w: foreshorecaravanpark.com.au

Golden Sands Tavern (02) 6568 6000
31 Bowra Street Nambucca Heads

Marcel Towers Holiday Apartments (02) 6568 7041
w: marceltowers.com.au

Nambucca River Cruises (02) 6569 4055
w: nambuccariverhouseboats.com

Valla Beach Tourist Park (02) 6569 5555
w: vallabeachtouristpark.com.au



P.O. BOX 128, NAMBUCCA HEADS
NSW 2448

Open Wednesday, Saturday and Sunday 2 - 4pm
or by appointment

Buses and Groups welcome

Admission: Adults \$3 Children 50 cents

p: (02) 6569 4353

e: nheadmuseum@midcoast.com.au

w: here.com.au/museum

NAMBUCCA HEADLAND MUSEUM



The "Royal Tar"

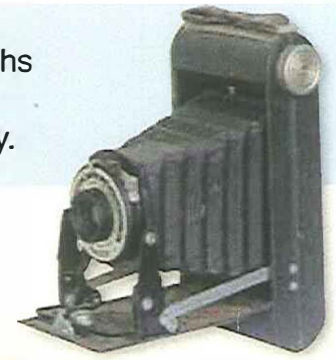
Discover the fascinating history of the Nambucca Valley from its early days as a pioneer settlement. See a wonderful collection of early Australian memorabilia.



Liston Street, Nambucca Heads
New South Wales 2448

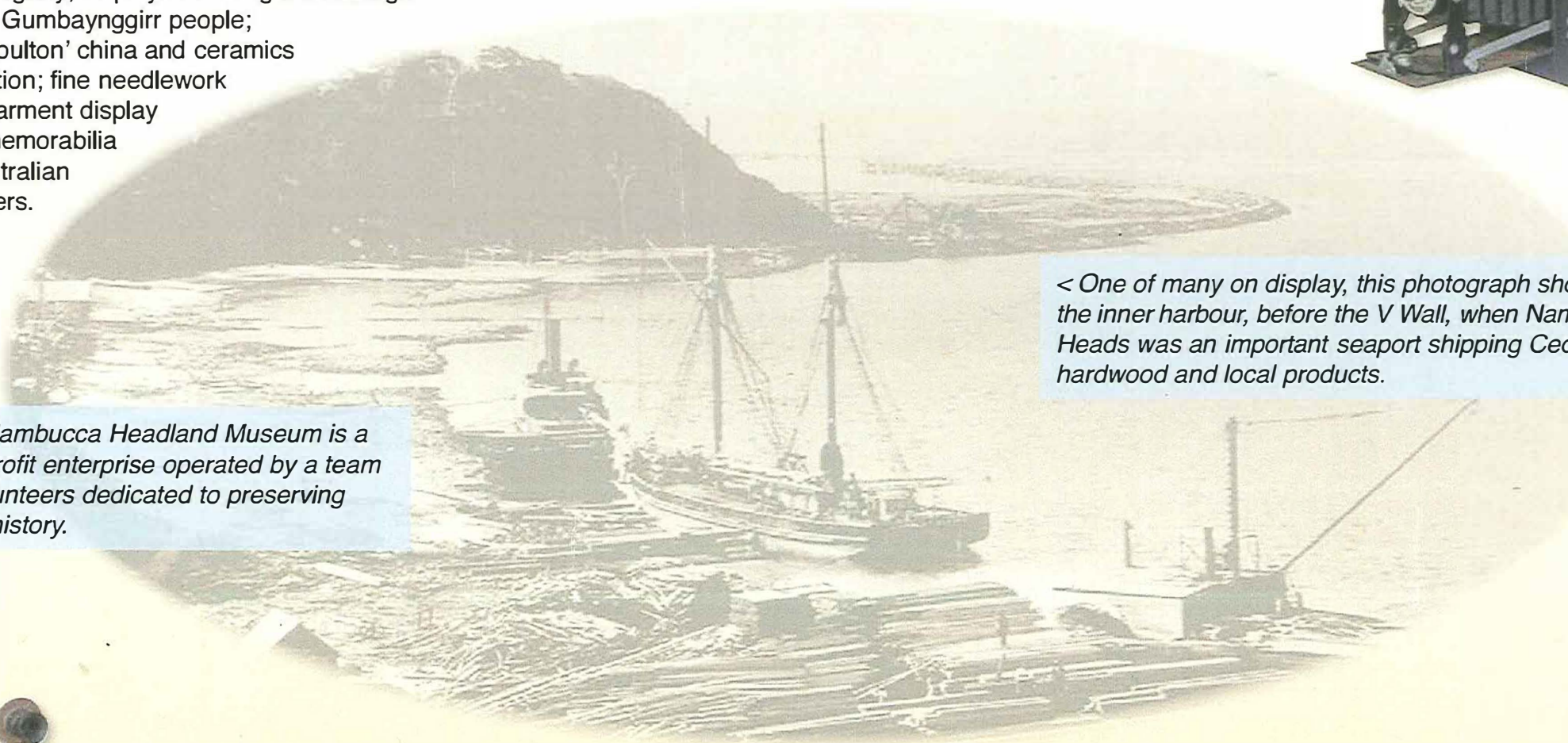
The Nambucca Headland Museum displays a comprehensive collection of items documenting the history of the Nambucca Valley and its people. Photographs, documents and artifacts relating to the early timber industry, shipping, shipwrecks, agricultural tools and the "Royal Tar" expedition to Paraguay; displays outlining the heritage of the Gumbaynggirr people; the 'Boulton' china and ceramics collection; fine needlework and garment display and memorabilia of Australian pioneers.

See a wonderful collection of historical photographs showing the life and times of the people and personalities who pioneered the Nambucca Valley.



< One of many on display, this photograph shows the inner harbour, before the V Wall, when Nambucca Heads was an important seaport shipping Cedar, hardwood and local products.

The Nambucca Headland Museum is a non profit enterprise operated by a team of volunteers dedicated to preserving local history.



< See an extensive display of interesting and nostalgic items from yesteryear >

